

# HONDA

## J2534 Reprogramming User Guide for version 4.6 and higher

Updated December 18, 2012

## **Important Notice**

Do NOT program a control module unless you are directed by a service procedure or you are directed by a Honda/Acura Service Bulletin. Programming a control module at any other time will not permanently correct a customer's concern.

American Honda urges end users to always use the LATEST production release of the J2534 Honda Reprogramming software. Using the latest version of the software is the best way to ensure successful reprogramming of applicable control modules.

It is possible to damage the vehicle's electronic control modules during reprogramming. Ensure the following conditions are met BEFORE programming a control module:

The vehicle battery must be fully charged before programming the control module. Stable battery voltage is critical during programming. Any fluctuation, spiking, over voltage or loss of voltage will interrupt programming. Turn OFF or disable any system that may put a load on the vehicle battery.

Make certain all tool connections are secure. Do NOT disturb the tool harnesses while programming. If an interruption occurs during the programming procedure, programming failure or control module damage may occur.

**THE ON-SCREEN REPROGRAMMING PROCEDURE MUST BE FOLLOWED EXACTLY AS OUTLINED BY THE SOFTWARE. FAILURE TO FOLLOW THESE INSTRUCTIONS WILL CAUSE THE REPROGRAMMING TO FAIL.**

Some modules may require additional programming/setup events performed before or after programming. Please refer to the appropriate Service Bulletins for details. (e.g. IMA Battery Module)

The information in Service Bulletins is intended for use by trained, professional technicians with the knowledge, tools, and equipment to do the job properly and safely. The procedures should not be performed by "do-it-yourselfers". American Honda reserves the right to supersede this information with updates. The most recent information is available through American Honda's on-line technical resources.

## Terms and Conditions

The following statements describe American Honda Motor Co., Inc.'s (hereafter also referred to as "Honda") policies and terms of use for Honda's reprogramming software. By using this software you acknowledge and agree to all terms and conditions stated herein. If you do not agree to these terms, do not use this software.

You are responsible for proper reprogramming of Honda/Acura control modules. All problems and complaints that may occur from the use of the J2534 devices are the sole responsibility of the reprogramming device manufacturer. If you experience any problems, contact the reprogramming device manufacturer. Honda will not provide technical support.

All reprogrammable Honda/Acura vehicles comply with the SAE J2534 standard. You are responsible for using a compatible J2534 reprogramming device. Contact the reprogramming device manufacturer to confirm Honda/Acura compatibility before use.

Honda will NOT be responsible for damaged control modules.

**HONDA MAKES NO WARRANTIES OR REPRESENTATIONS, EXPRESS OR IMPLIED, IN FACT OR IN LAW, INCLUDING THE IMPLIED WARRANTIES OF MERCHANTABILITY AND FITNESS FOR A PARTICULAR PURPOSE. IN NO EVENT WILL HONDA BE LIABLE FOR INCIDENTAL, SPECIAL OR CONSEQUENTIAL PENALTIES OR DAMAGES, INCLUDING LOST PROFITS.**

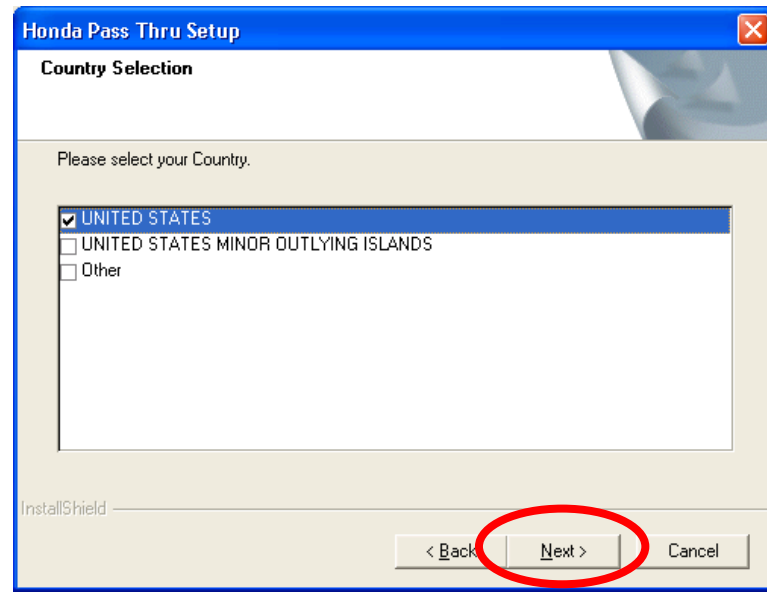
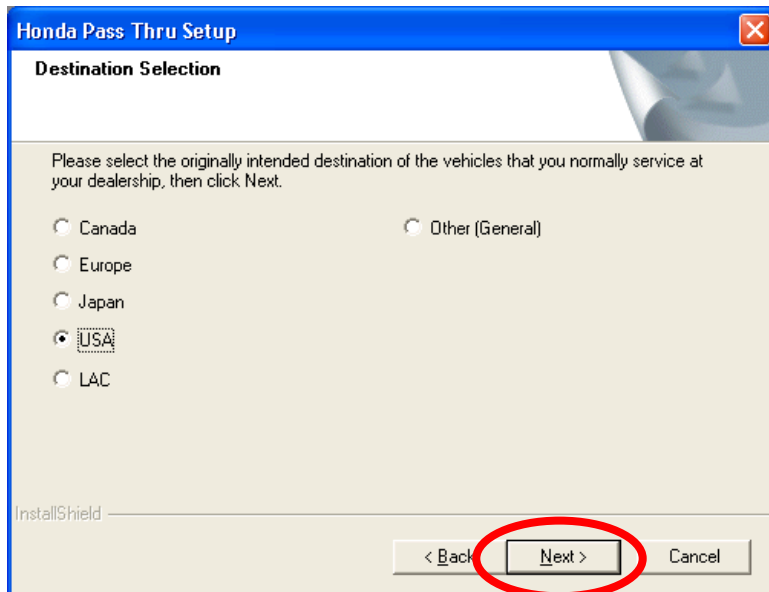
These Terms & Conditions are subject to change without notice.

Before installing the HONDA J2534 Reprogramming software, please ensure the following:


- The interface pass-thru device is fully compliant with SAE J2534.
- Software and/or driver for the SAE J2534 compliant pass-thru device is already installed to your PC.

# Installing the HONDA J2534 Reprogramming Software


1. Double click “Setup.exe” to install applications.
2. Select destination and country.
3. Follow the on-screen instructions to complete the installation.



# Precautions

 Please note that the following actions have a high risk of damaging the vehicle Control Module and should NOT be done during the update process:

- Turning off the ignition switch
- Removing the battery of vehicle
- Disconnecting the SAE J2534 compliant pass-thru device from the vehicles DLC connector

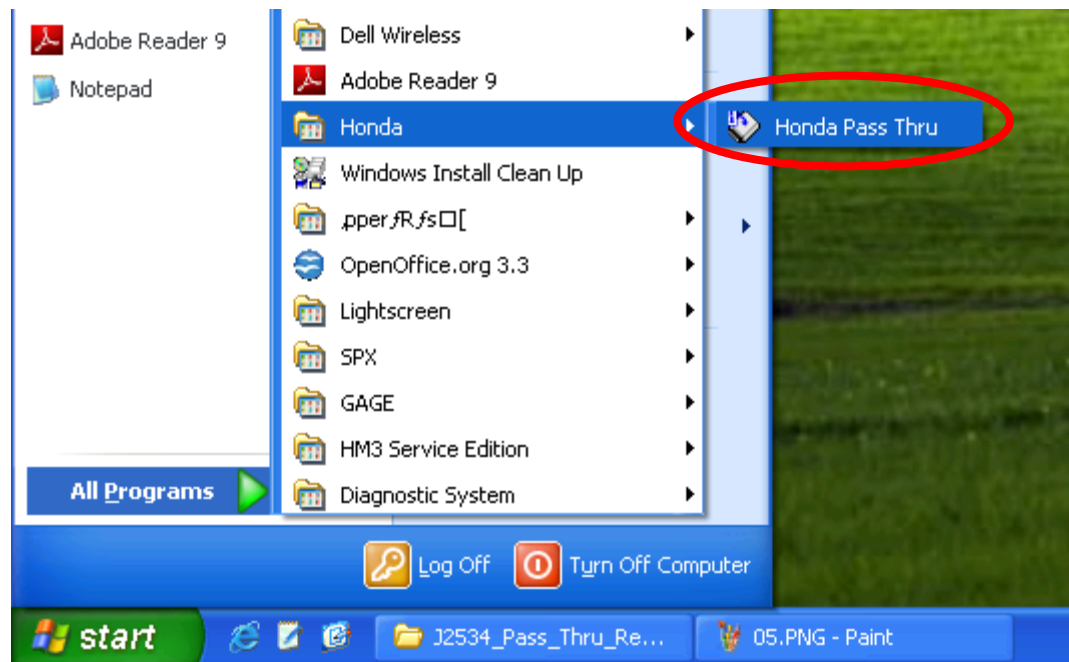
 If the reprogramming process continues the Control Module is OK. If the reprogramming process does NOT continue, Control Module is damaged and needs to be replaced.

## At the Vehicle

1. Ensure that the vehicle battery is fully charged and or use an external battery jumper pack.
2. Turn the Ignition switch ON (II).
3. Connect the J2534 compliant pass-thru device with the vehicle's DLC (J1962).
4. Connect your J2534 compliant pass-thru device with your PC.

# Starting up the Applications

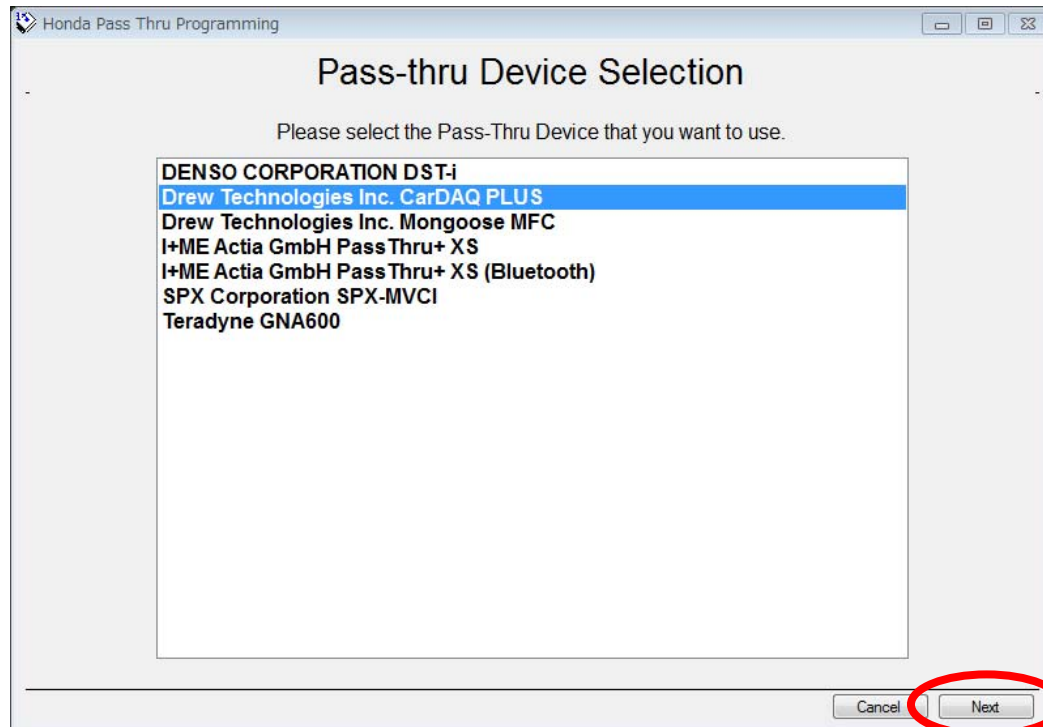
- Start “Honda Pass Thru” Software from the start menu.





# Pass-thru Device Selection

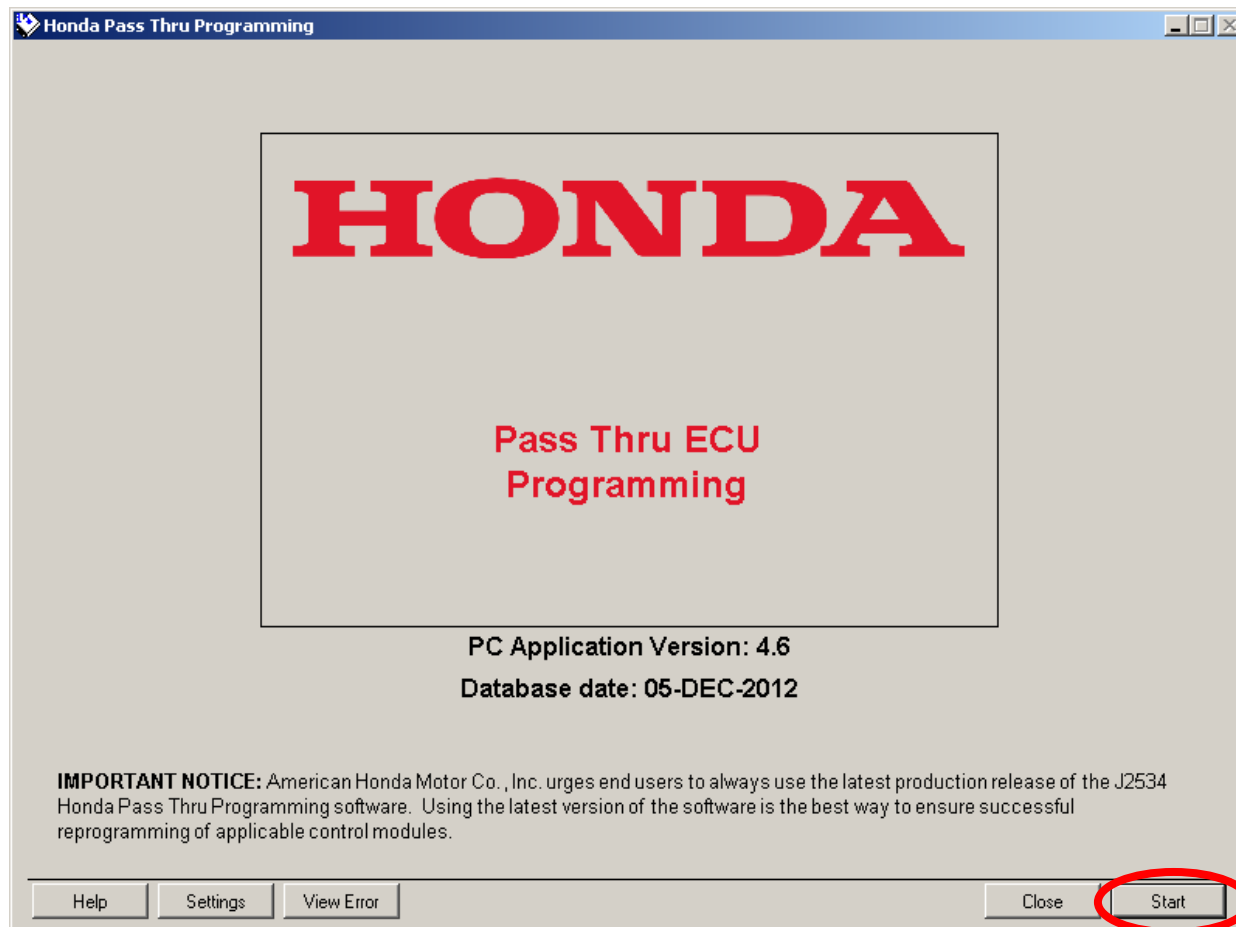
- Select your pass-thru device and Click “Next”



Note: Only SAE J2534 compliant pass-thru devices installed will the correct drivers will appear on this list.

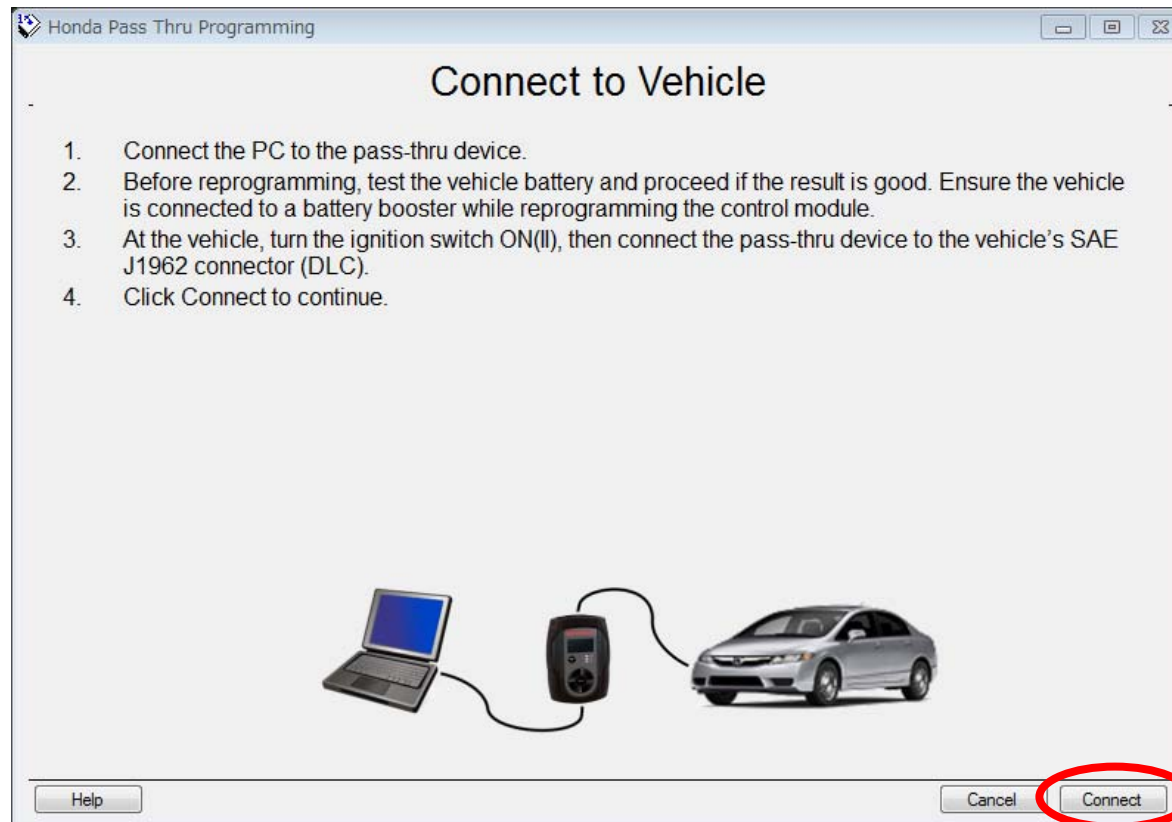
# Welcome Screen

- Click “Start” to begin reprogramming procedures.



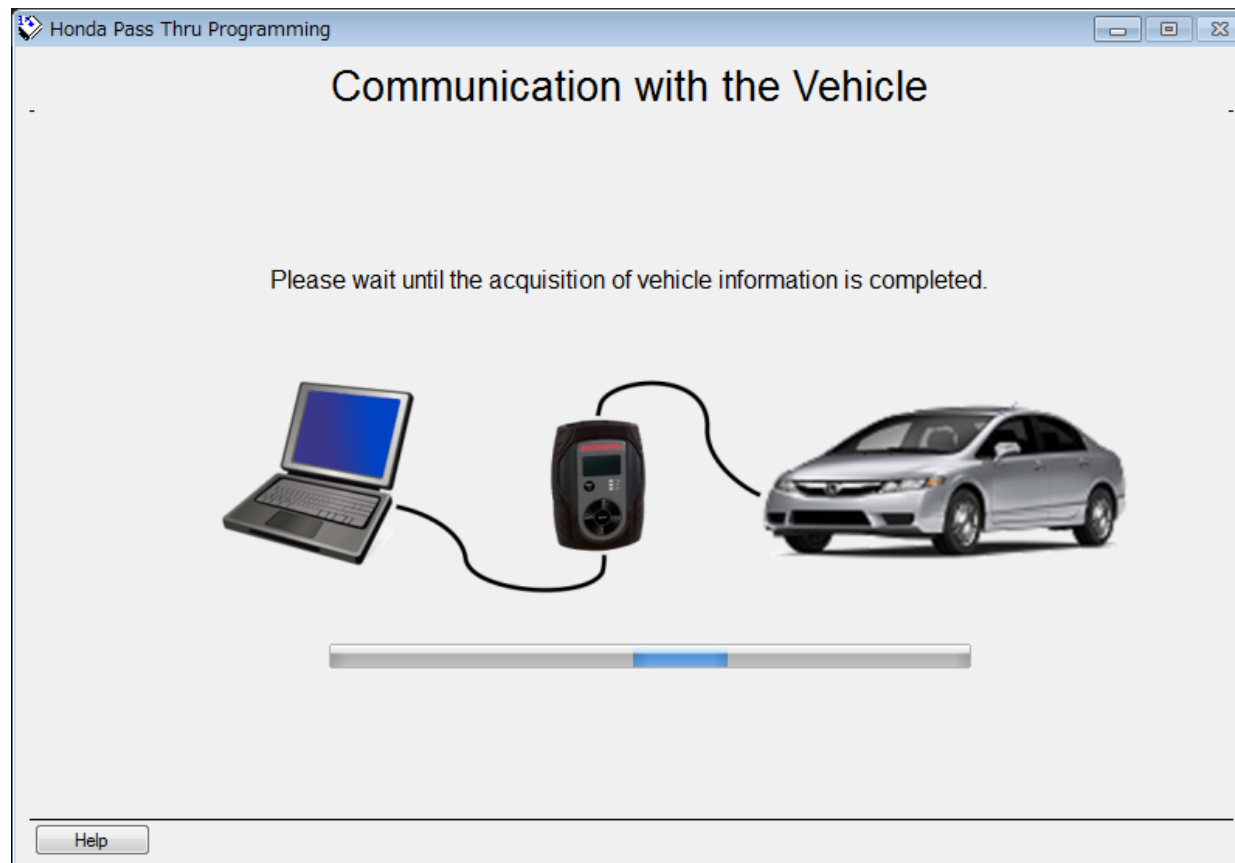
# Connect to Vehicle

- Ensure the following on-screen instructions and Click “Connect”



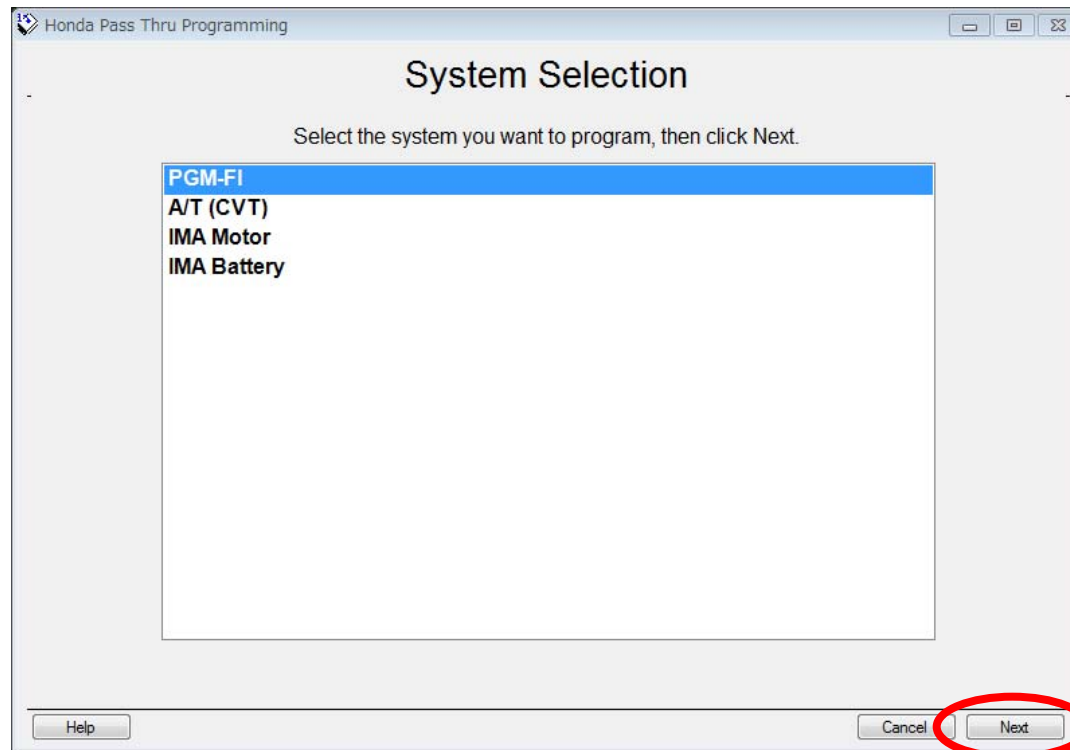
# Communication with the Vehicle (Read ECU Program ID)

- Please wait until vehicle communication is completed.



# System Selection

- Select the system and Click “Next”



Note: The system which the latest program is already updated is grayed out.

# Update Information

- Confirm the update information and Click “Yes” to Start reprogramming.

Honda Pass Thru Programming

## PGM-FI Update Information

If this is the Update that you want to use, click Yes; otherwise, click No.

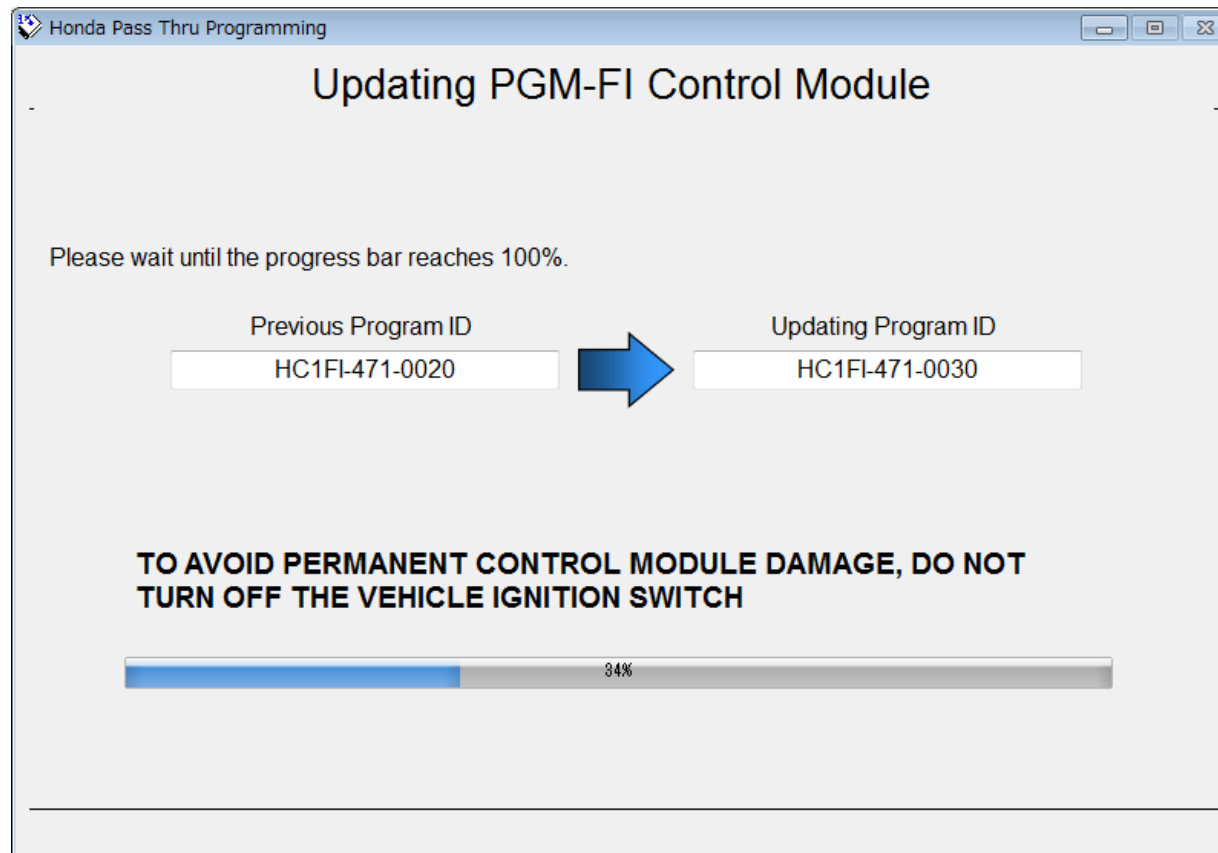
Current Program ID: HC1FI-471-0020 → Latest Program ID: HC1FI-471-0030

Latest Program information

System	PGM-FI
Program ID	HC1FI-471-0030
Program Part No.	Civic CAN FI 3
CM Part No.	Civic CAN FI 3
Vehicle Model	Civic
Update Description	06 Civic CAN FI test file 3

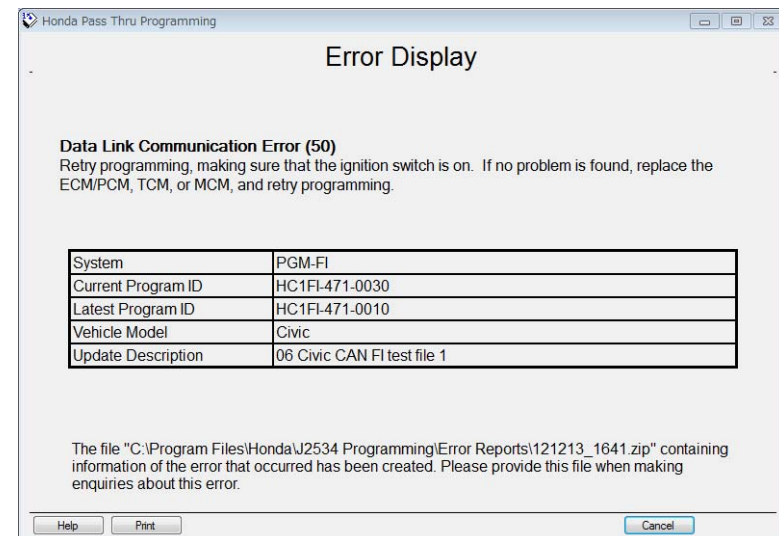
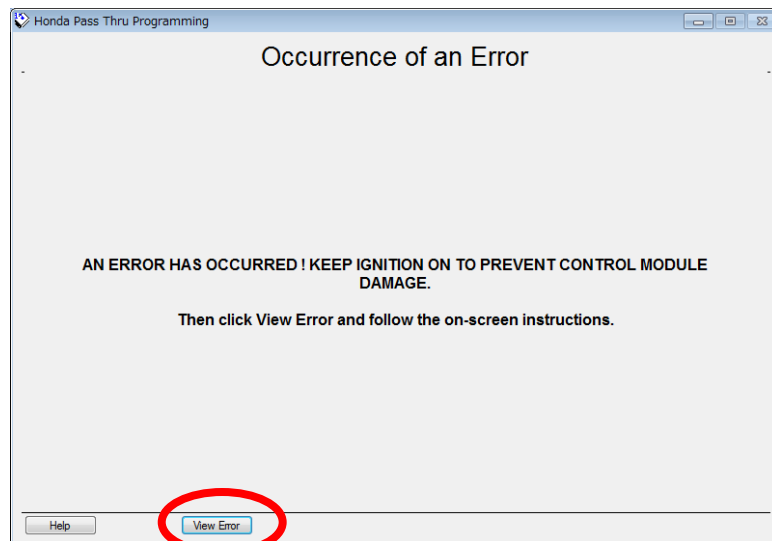
# Updating System (ECU Reprogramming)

- Please wait until the progress bar reaches at 100%.



# Important

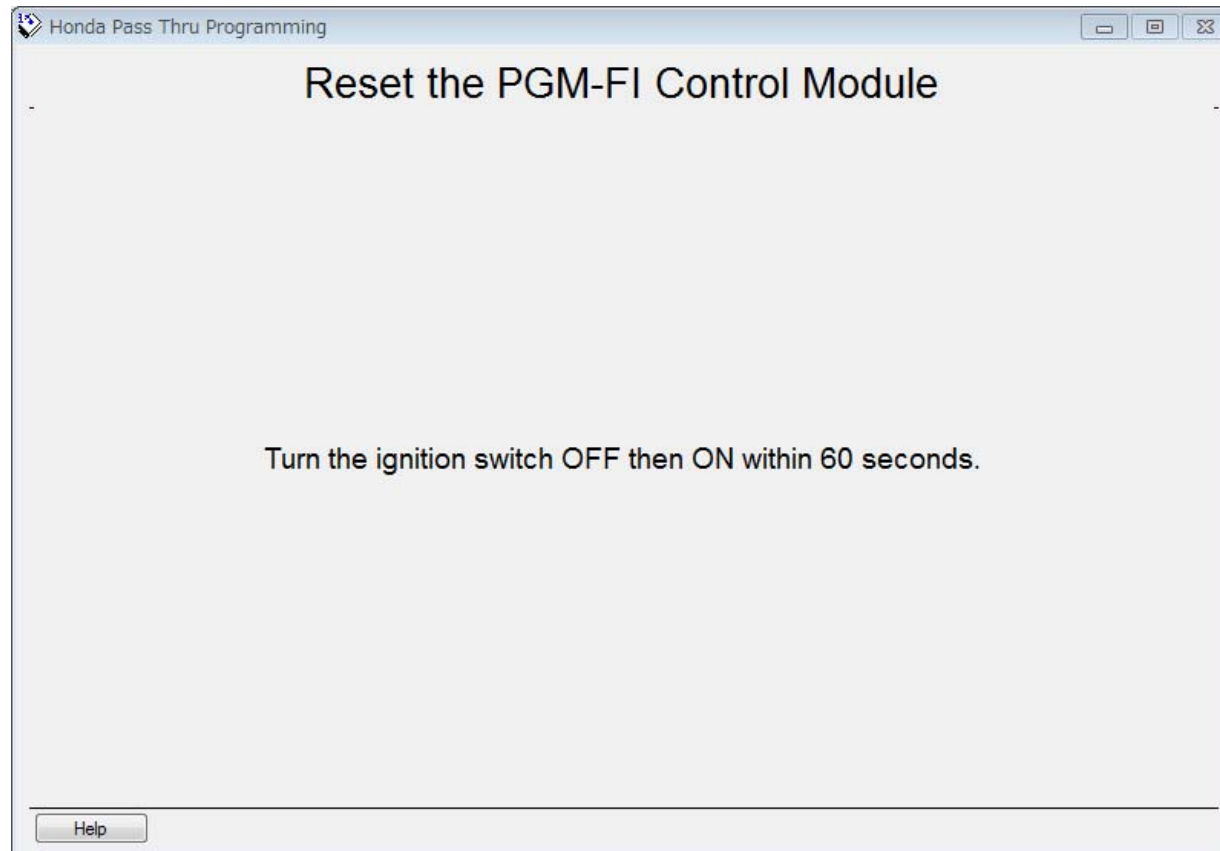
- If an “Occurrence of an Error” should appear, click “View Error” to read the Error Screen. Follow the on-screen recovery instructions.
- Do not turn off the ignition during the reprogramming procedures unless you are directed to do so.





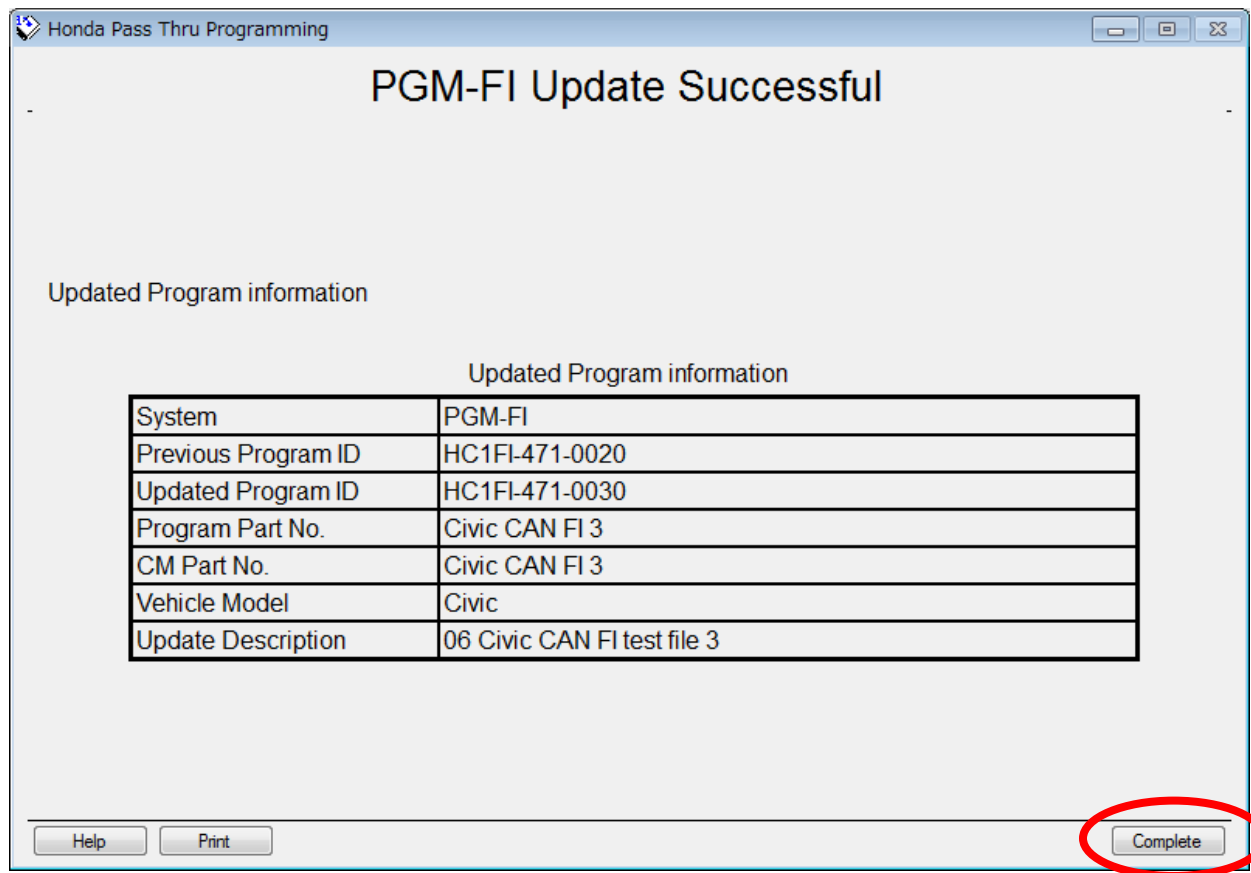
# Ignition Cycle to ECU reboot

- Turn the ignition OFF then ON within 60 seconds.



# Reprogramming Completion

- Click “Complete” to return to the welcome screen.



# Reprogramming Completed

- After the reprogramming procedures are completed, you must perform the “idle learn” procedures.

Please refer to the procedures shown in the next page.

# Idle Learn Procedures

1. Ensure the vehicle is in “Park” or “Neutral” position.
2. All electrical components (A/C, audio, rear window defogger, light, etc.,) are switched off.
3. Turn the ignition switch ON(II), and wait until the radiator fan is switched on twice. Warm up the engine for two more minutes.
4. Idle for about 5 minutes with the throttle fully closed.

**NOTE:** The running time of the radiator fan is excluded from the estimation time of 5 minutes.

End of Document